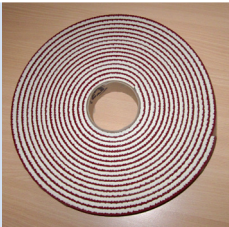
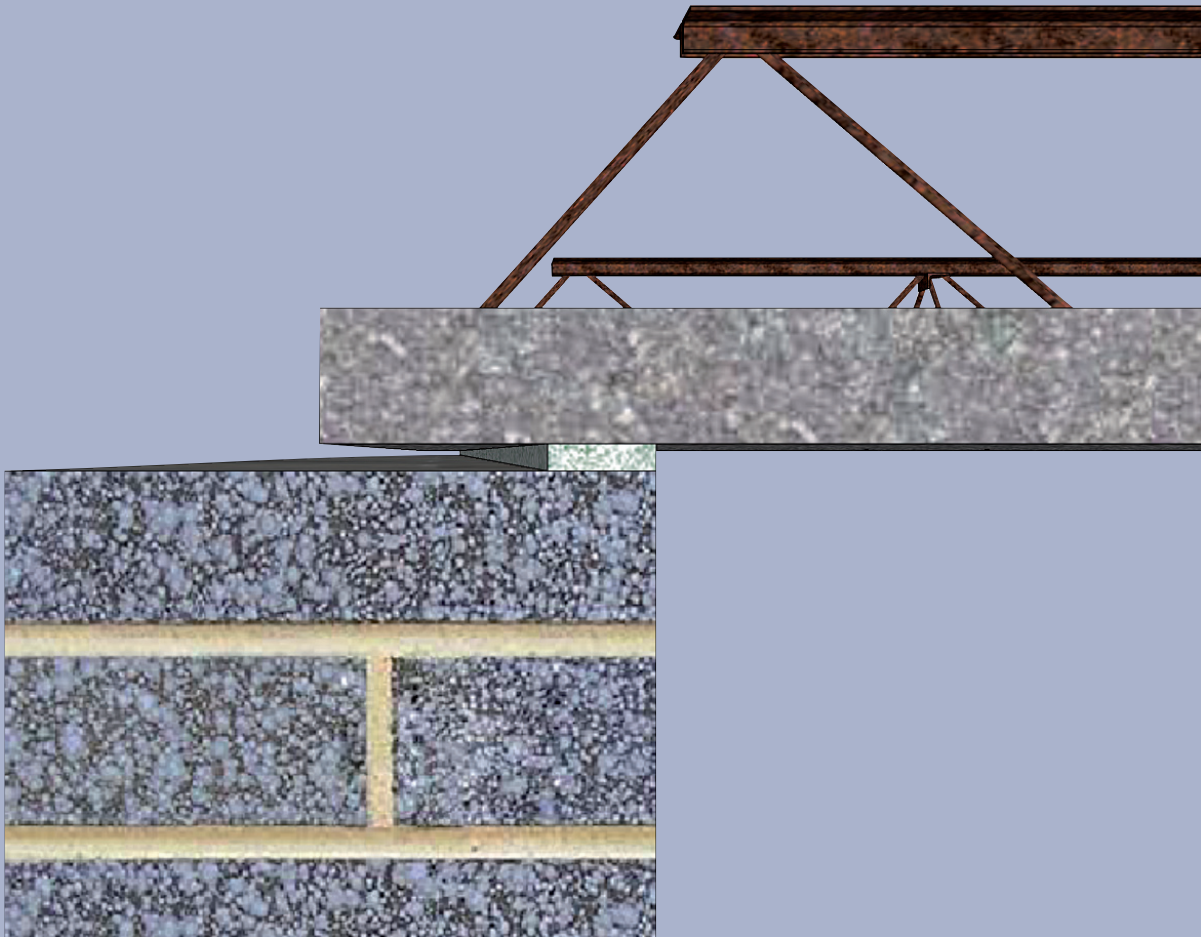


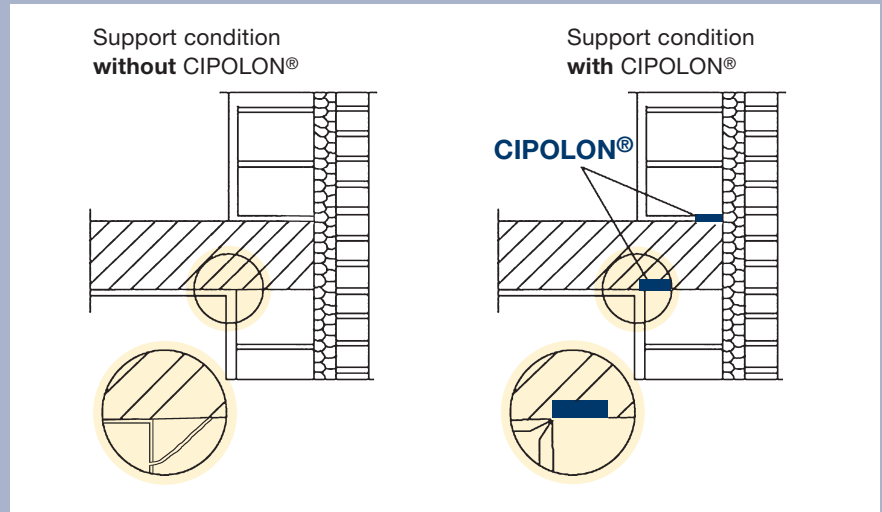
CIPOLON®



Sealing and Edge Protection

EDGE PROTECTION

- High-strength PES mesh with foam on both sides
- Textured surface, non skid, impact- and wear-resistant
- Good accuracy of level, even at low temperatures
- No reduction of the concrete compressive zone
- Thickness: approx. 7 mm
- Roll dimensions: 10mx30mm
- Weight: approx. 500 g per roll
- Fire behaviour: flammable, melting and forming drops
- Water absorption: about 10 % (DIN 53 493)



- **Highly compressible material to level out surface irregularities**
- **Highly effective sealant to prevent concrete from leaking when precast filigree or in-situ floors are constructed**
- **Highly effective to prevent edge spalling**

The contents of the publication in the result of many years of research an experience gained in application technology. All information is given in good faith; it does not represent a guarantee with respect to characteristics an does not exempt the user from testing the suitability of products and from ascertaining that the industrial property rights of third parties are not violated. No liability whatsoever will be accepted for damage – regardless of its nature and its legal basis – arising from advice given in this publication. This does not apply in the event that we or our legal representatives or our management are found guilty of having acted with intent or gross negligence. The exclusion of liability applies also to the personal liability of or legal representatives and employed in performing our obligations

Calenberg Ingenieure GmbH

Am Knübel 2-4
D-31020 Salzhemmendorf
Phone +49 (0) 51 53/94 00-0
Fax +49 (0) 51 53/94 00-49
info@calenberg-ingenieure.de
<http://www.calenberg-ingenieure.de>